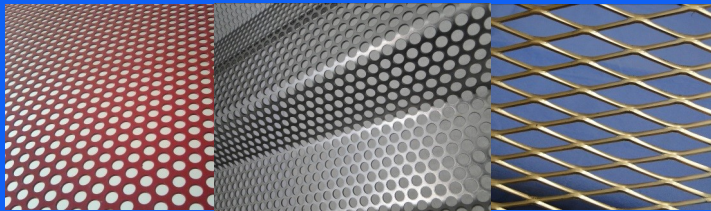
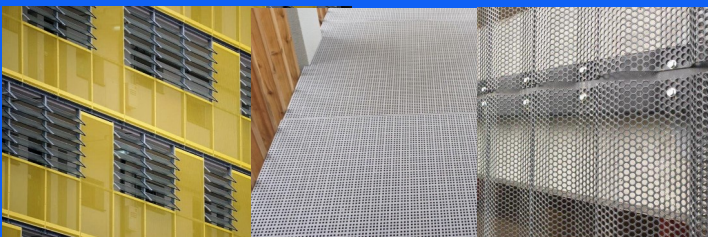
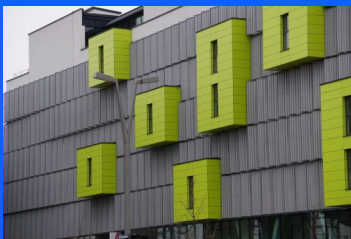
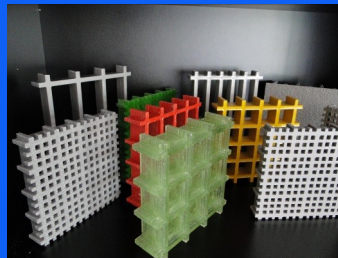


INTERMOLD Produktpalette

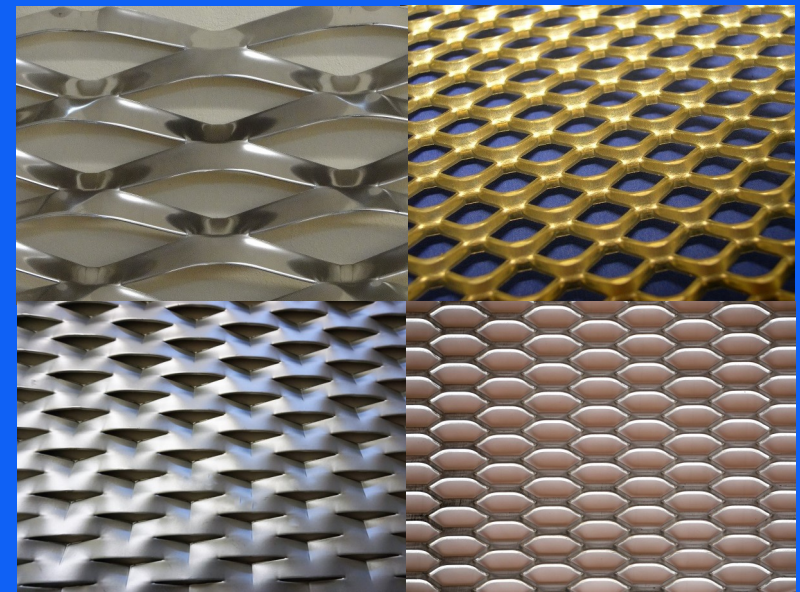


- Lochbleche
- Streckgitter
- GFK-Gitterroste
- CNC Blechbearbeitung



INTERMOLD Industrieservice GmbH, Rosenweg 1
A-4542 Nußbach, Austria,
Telefon: 07587 6011, Fax: 07587 60114
<http://www.intermold.at>, e-mail: office@intermold.at

Streckgitter



Streckgitter für alle Anwendungsbereiche

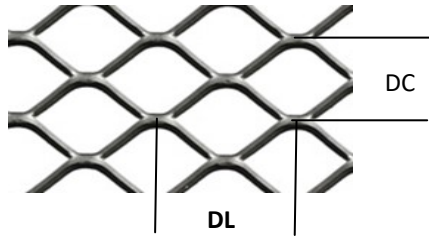
Maschengröße von 0,5 mm bis 150 mm

bis zu einer Breite von 2500 mm

aus den Materialien:

Aluminium • Stahl • Edelstahl • Kupfer • Messing

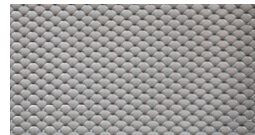
Streckgitter



DL = Maschenlänge in mm.
 DC = Maschenbreite in mm.
 St = Stegbreite in mm.
 s = Dicke in mm.
 Fq= Freier Querschnitt in %

Mikromaschen

Maximale Breite 600 mm

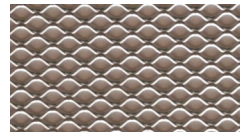


DL x DC x St x s	Fq
2 x 1,5 x 0,4 x 0,5	46,6%
2,5 x 2 x 0,5 x 0,5	50%
3 x 2 x 0,6 x 0,6	40%
4 x 2 x 0,6 x 0,5	20%

DL x DC x St x s	Fq
5 x 2 x 0,8 x 0,5	20%
5 x 2,7 x 1 x 0,5	26%
6 x 3 x 1 x 0,5	33,3%
8 x 4 x 1 x 1	50%

Kleinmaschen

Maximale Breite 1250/1500 mm

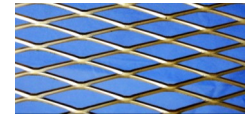


DL x DC x St x s	Fq
8 x 6 x 0,5 x 0,5	83,3%
10 x 5 x 1 x 1	60%
10 x 6 x 1,5 x 1	50%
12 x 6 x 1,5 x 1	50%
12 x 7 x 1,2 x 1	66%

DL x DC x St x s	Fq
15 x 8 x 1 x 1	75%
16 x 8 x 1,5 x 1	62,5%
16 x 6 x 2 x 1,5	33%
20 x 8 x 2 x 1	50%
20 x 10 x 2 x 1,5	60%

Mittelmaschen

Maximale Breite 1250/1500 mm

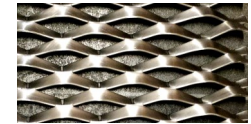


DL x DC x St x s	Fq
22 x 12 x 2,5 x 1,5	58%
25 x 9 x 1,5 x 1,5	67%
28 x 10 x 2 x 2	60%
28 x 12 x 2 x 2	67%
29 x 8 x 2 x 1,5	50%
30 x 12 x 2 x 1,5	67%
30 x 14 x 2 x 2	71%
40 x 18 x 2,5 x 1	72%

DL x DC x St x s	Fq
42 x 13 x 2 x 2	69%
42 x 13 x 5 x 1	28%
42 x 18 x 2 x 2	78%
44 x 12 x 2 x 1,5	67%
50 x 18 x 2 x 2	80%
50 x 23 x 3 x 2	74%
50 x 22 x 1,5 x 1,5	86%
50 x 22 x 7 x 2	36%

Großmaschen

Maximale Breite bis 2500 mm

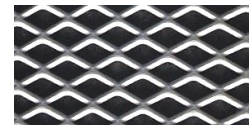


DL x DC x St x s	Fq
62 x 22 x 3 x 2	72%
62 x 25 x 3 x 3	76%
62 x 30 x 4 x 3	73%
75 x 30 x 3 x 3	80%
75 x 31 x 7 x 3	55%

DL x DC x St x s	Fq
88 x 38 x 4 x 3	79%
88 x 38 x 7 x 3	63%
88 x 44 x 12 x 3	45%
103 x 27 x 5 x 3	63%
115 x 55 x 18 x 2	35%

Quadratmaschen

Maximale Breite 1250 mm



DL x DC x St x s	Fq
10 x 7,1 x 1,5 x 1	58%
13 x 10 x 1,5 x 1	70%
15 x 11 x 1,5 x 1	73%
16 x 10 x 1,7 x 1	67%

DL x DC x St x s	Fq
18 x 11,5 x 1,7 x 1	55%
20 x 13,5 x 1,5 x 1	78%
25 x 14 x 0,8 x 0,8	88%
25 x 16 x 2 x 1,5	71%